

# Coronavirus disease 2019 (COVID-19) Situation Report – 84

Data as received by WHO from national authorities by 10:00 CET, 13 April 2020

## HIGHLIGHTS

- No new country/territory/area reported cases of COVID-19 in the past 24 hours.
- There is no evidence that the Bacille Calmette-Guérin vaccine (BCG) protects people against infection with COVID-19 virus. Two clinical trials addressing this question are underway, and WHO will evaluate the evidence when it is available. In the absence of evidence, WHO does not recommend BCG vaccination for the prevention of COVID-19. For more details, please see [here](#).

## SITUATION IN NUMBERS total (new cases in last 24 hours)

### Globally

1 773 084 confirmed (76 498)

111 652 deaths (5702)

### European Region

913 349 confirmed (33 243)

77 419 deaths (3183)

### Region of the Americas

610 742 confirmed (36 804)

23 759 deaths (2228)

### Western Pacific Region

121 426 confirmed (1310)

4125 deaths (67)

### Eastern Mediterranean Region

99 713 confirmed (3768)

5107 deaths (164)

### South-East Asia Region

16 883 confirmed (842)

766 deaths (38)

### African Region

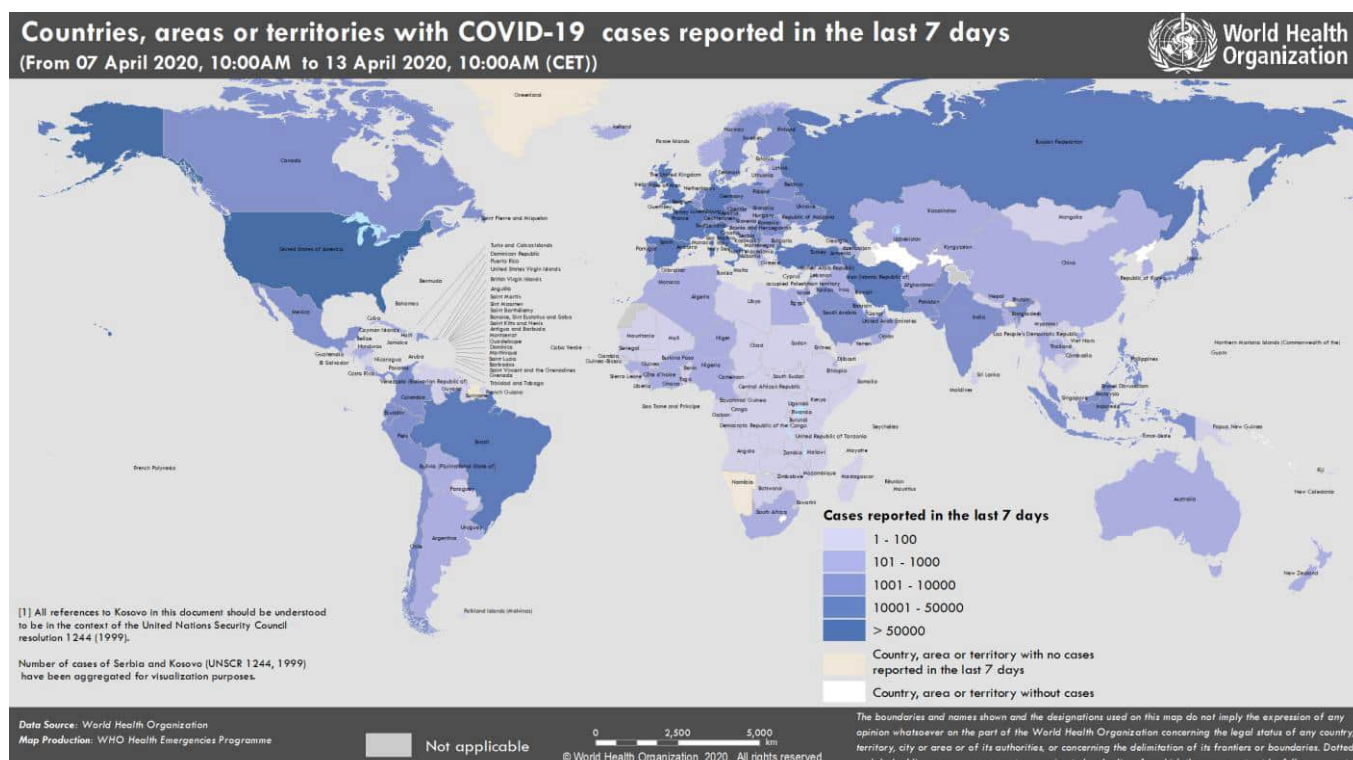
10 259 confirmed (531)

464 deaths (21)

### WHO RISK ASSESSMENT

Global Level      Very High

Figure 1. Countries, territories or areas with reported confirmed cases of COVID-19, 13 April 2020



## SURVEILLANCE

**Table 1. Countries, territories or areas with reported laboratory-confirmed COVID-19 cases and deaths. Data as of 13 April 2020\***

Reporting Country/ Territory/Area <sup>†</sup>	Total confirmed ‡ cases	Total confirmed new cases	Total deaths	Total new deaths	Transmission classification <sup>§</sup>	Days since last reported case
<b>Western Pacific Region</b>						
China	83597	115	3351	2	Clusters of cases	0
Republic of Korea	10537	25	217	3	Clusters of cases	0
Japan	7255	507	102	4	Clusters of cases	0
Australia	6322	33	61	4	Clusters of cases	0
Malaysia	4683	153	76	3	Clusters of cases	0
Philippines	4648	220	297	50	Clusters of cases	0
Singapore	2532	233	8	0	Clusters of cases	0
New Zealand	1064	15	5	1	Sporadic cases	0
Viet Nam	262	4	0	0	Clusters of cases	0
Brunei Darussalam	136	0	1	0	Sporadic cases	2
Cambodia	122	0	0	0	Sporadic cases	1
Lao People's Democratic Republic	19	3	0	0	Sporadic cases	0
Fiji	16	0	0	0	Sporadic cases	2
Mongolia	16	0	0	0	Sporadic cases	4
Papua New Guinea	2	0	0	0	Sporadic cases	4
<b>Territories**</b>						
Guam	133	0	5	0	Clusters of cases	1
French Polynesia	53	2	0	0	Sporadic cases	0
New Caledonia	18	0	0	0	Sporadic cases	10
Northern Mariana Islands (Commonwealth of the)	11	0	2	0	Pending	4
<b>European Region</b>						
Spain	166019	4167	16972	619	Pending	0
Italy	156363	4092	19901	431	Pending	0
Germany	123016	2537	2799	126	Pending	0
France	94382	1595	14374	560	Pending	0
The United Kingdom	84283	5288	10612	737	Pending	0
Turkey	56956	4789	1198	97	Community transmission	0
Belgium	29647	1629	3600	254	Pending	0
Netherlands	25587	1174	2737	94	Pending	0
Switzerland	25220	400	858	27	Community transmission	0
Russian Federation	18328	2558	148	18	Clusters of cases	0
Portugal	16585	598	504	34	Pending	0
Austria	13937	130	350	13	Pending	0
Israel	10878	353	103	7	Pending	0
Sweden	10483	332	899	12	Pending	0

Ireland	9655	727	334	14	Pending	0
Poland	6674	318	232	24	Pending	0
Norway	6415	95	103	5	Pending	0
Romania	6300	310	306	24	Pending	0
Denmark	6174	178	273	13	Pending	0
Czechia	5991	89	138	9	Pending	0
Serbia	3630	250	80	6	Pending	0
Luxembourg	3281	11	66	4	Pending	0
Ukraine	3102	325	93	10	Clusters of cases	0
Finland	2974	69	56	7	Pending	0
Belarus	2578	352	26	3	Clusters of cases	0
Greece	2114	33	98	5	Pending	0
Iceland	1701	12	8	0	Pending	0
Republic of Moldova	1662	102	33	3	Pending	0
Croatia	1600	66	23	2	Pending	0
Hungary	1458	48	109	10	Pending	0
Estonia	1309	5	25	1	Pending	0
Slovenia	1205	17	53	3	Pending	0
Azerbaijan	1098	40	11	0	Clusters of cases	0
Lithuania	1062	9	24	1	Pending	0
Armenia	1039	26	14	1	Clusters of cases	0
Bosnia and Herzegovina	1007	59	38	1	Community transmission	0
Kazakhstan	979	82	12	2	Pending	0
Uzbekistan	896	100	4	1	Clusters of cases	0
North Macedonia	828	0	34	0	Clusters of cases	1
Slovakia	742	14	2	0	Pending	0
Bulgaria	675	14	29	1	Pending	0
Latvia	651	21	5	2	Pending	0
Andorra	639	17	29	1	Community transmission	0
Cyprus	633	17	16	1	Pending	0
Albania	446	0	23	0	Clusters of cases	1
Kyrgyzstan	419	42	5	0	Pending	0
Malta	378	8	3	0	Pending	0
San Marino	356	0	35	0	Community transmission	1
Montenegro	267	5	2	0	Clusters of cases	0
Georgia	266	14	3	0	Clusters of cases	0
Liechtenstein	80	0	1	0	Pending	2
Monaco	54	0	0	0	Sporadic cases	4
Holy See	8	0	0	0	Sporadic cases	4
<b>Territories**</b>						
Kosovo <sup>[1]</sup>	362	79	7	0	Community transmission	0
Isle of Man	226	22	1	0	Pending	0
Guernsey	209	9	6	0	Pending	0
Jersey	198	0	4	0	Pending	1
Faroe Islands	184	0	0	0	Pending	5
Gibraltar	129	16	0	0	Pending	0

Greenland	11	0	0	0	Pending	7
<b>South-East Asia Region</b>						
India	9152	796	308	35	Pending	0
Indonesia	4241	0	373	0	Community transmission	1
Thailand	2579	28	40	2	Pending	0
Bangladesh	621	0	34	0	Pending	1
Sri Lanka	210	11	7	0	Clusters of cases	0
Myanmar	41	3	4	1	Clusters of cases	0
Maldives	20	1	0	0	Sporadic cases	0
Nepal	12	3	0	0	Sporadic cases	0
Bhutan	5	0	0	0	Sporadic cases	10
Timor-Leste	2	0	0	0	Sporadic cases	2
<b>Eastern Mediterranean Region</b>						
Iran (Islamic Republic of)	71686	1657	4474	117	Community transmission	0
Pakistan	5374	336	93	7	Clusters of cases	0
Saudi Arabia	4462	429	59	7	Clusters of cases	0
United Arab Emirates	4123	387	22	2	Pending	0
Qatar	2979	251	7	1	Pending	0
Egypt	2065	126	159	13	Clusters of cases	0
Morocco	1661	116	118	7	Clusters of cases	0
Iraq	1352	34	76	4	Clusters of cases	0
Kuwait	1234	80	1	0	Clusters of cases	0
Bahrain	1136	96	6	0	Clusters of cases	0
Oman	727	128	4	1	Clusters of cases	0
Tunisia	707	22	31	3	Community transmission	0
Lebanon	630	11	20	0	Clusters of cases	0
Afghanistan	607	52	19	1	Clusters of cases	0
Jordan	389	8	7	0	Clusters of cases	0
Djibouti	215	28	2	0	Clusters of cases	0
Somalia	25	4	2	1	Sporadic cases	0
Libya	25	0	1	0	Clusters of cases	1
Syrian Arab Republic	25	0	2	0	Community transmission	1
Sudan	19	0	2	0	Sporadic cases	1
Yemen	1	0	0	0	Pending	2
<b>Territories**</b>						
occupied Palestinian territory	271	3	2	0	Clusters of cases	0
<b>Region of the Americas</b>						
United States of America	524514	31633	20444	1928	Community transmission	0
Canada	23702	1158	674	74	Community transmission	0
Brazil	20727	1089	1124	68	Community transmission	0
Ecuador	7466	209	333	18	Community transmission	0

Chile	7213	286	80	7	Community transmission	0
Peru	6848	951	181	12	Community transmission	0
Mexico	4219	375	273	40	Community transmission	0
Panama	3234	260	79	5	Community transmission	0
Dominican Republic	2967	347	173	47	Community transmission	0
Colombia	2709	236	100	20	Community transmission	0
Argentina	1975	0	82	0	Community transmission	1
Cuba	669	49	18	2	Clusters of cases	0
Costa Rica	577	19	3	0	Clusters of cases	0
Uruguay	501	7	7	0	Clusters of cases	0
Honduras	393	1	25	1	Clusters of cases	0
Bolivia (Plurinational State of)	300	25	24	4	Clusters of cases	0
Venezuela (Bolivarian Republic of)	171	0	9	0	Clusters of cases	2
Guatemala	153	16	3	0	Clusters of cases	0
Paraguay	134	1	6	0	Community transmission	0
El Salvador	125	7	6	0	Clusters of cases	0
Trinidad and Tobago	112	3	8	0	Clusters of cases	0
Jamaica	69	4	4	0	Clusters of cases	0
Barbados	68	1	4	0	Clusters of cases	0
Bahamas	42	0	8	0	Clusters of cases	1
Guyana	37	0	6	0	Clusters of cases	3
Haiti	31	0	2	0	Community transmission	1
Antigua and Barbuda	21	0	2	0	Clusters of cases	1
Dominica	16	0	0	0	Clusters of cases	2
Saint Lucia	15	0	0	0	Sporadic cases	1
Grenada	14	0	0	0	Clusters of cases	1
Belize	13	3	2	0	Sporadic cases	0
Saint Kitts and Nevis	12	0	0	0	Sporadic cases	1
Saint Vincent and the Grenadines	12	0	0	0	Sporadic cases	2
Nicaragua	9	2	1	0	Pending	0
Suriname	10	0	1	0	Sporadic cases	9
<b>Territories**</b>						
Puerto Rico	897	109	44	2	Clusters of cases	0
Martinique	156	1	6	0	Clusters of cases	0
Guadeloupe	143	0	8	0	Clusters of cases	2
Aruba	92	0	0	0	Clusters of cases	1
French Guiana	86	0	0	0	Clusters of cases	1
Cayman Islands	53	8	1	0	Clusters of cases	0
United States Virgin Islands	51	0	1	0	Clusters of cases	2

Bermuda	50	2	4	0	Clusters of cases	0
Sint Maarten	50	0	9	0	Clusters of cases	2
Saint Martin	33	0	2	0	Sporadic cases	1
Curaçao	14	0	1	0	Sporadic cases	4
Montserrat	9	0	0	0	Sporadic cases	2
Turks and Caicos Islands	9	1	1	0	Sporadic cases	0
Saint Barthelemy	6	0	0	0	Sporadic cases	13
Falkland Islands (Malvinas)	5	0	0	0	Clusters of cases	4
Anguilla	3	0	0	0	Sporadic cases	9
Bonaire, Sint Eustatius and Saba	3	1	0	0	Sporadic cases	0
British Virgin Islands	3	0	0	0	Sporadic cases	12
Saint Pierre and Miquelon	1	0	0	0	Sporadic cases	5
<b>African Region</b>						
South Africa	2173	145	25	0	Community transmission	0
Algeria	1914	89	293	18	Community transmission	0
Cameroon	803	0	10	0	Clusters of cases	2
Ghana	566	158	8	0	Clusters of cases	0
Côte d'Ivoire	533	0	4	0	Clusters of cases	1
Niger	529	38	12	1	Clusters of cases	0
Burkina Faso	443	0	19	0	Clusters of cases	2
Mauritius	324	5	9	0	Clusters of cases	0
Nigeria	323	5	10	0	Clusters of cases	0
Senegal	280	2	2	0	Clusters of cases	0
Guinea	250	0	0	0	Clusters of cases	1
Democratic Republic of the Congo	235	12	20	0	Clusters of cases	0
Kenya	197	6	8	1	Clusters of cases	0
Rwanda	126	6	0	0	Sporadic cases	0
Madagascar	106	2	0	0	Clusters of cases	0
Mali	87	0	7	0	Sporadic cases	1
Togo	76	3	3	0	Sporadic cases	0
Ethiopia	71	2	3	0	Sporadic cases	0
Congo	70	10	5	0	Clusters of cases	0
Gabon	57	8	1	0	Sporadic cases	0
Uganda	54	1	0	0	Sporadic cases	0
Liberia	50	2	5	0	Sporadic cases	0
Zambia	43	3	2	0	Sporadic cases	0
Guinea-Bissau	39	1	0	0	Sporadic cases	0
Benin	35	0	1	0	Sporadic cases	1
Eritrea	34	1	0	0	Sporadic cases	0
United Republic of Tanzania	32	0	3	0	Sporadic cases	2
Mozambique	20	0	0	0	Sporadic cases	2
Angola	19	0	2	0	Sporadic cases	4
Chad	18	7	0	0	Sporadic cases	0

Equatorial Guinea	18	0	0	0	Sporadic cases	3
Namibia	16	0	0	0	Sporadic cases	7
Eswatini	14	2	0	0	Sporadic cases	0
Zimbabwe	14	1	3	0	Sporadic cases	0
Botswana	13	0	1	0	Sporadic cases	3
Malawi	13	1	2	0	Sporadic cases	0
Central African Republic	11	0	0	0	Sporadic cases	2
Seychelles	11	0	0	0	Sporadic cases	6
Sierra Leone	10	2	0	0	Sporadic cases	0
Gambia	9	0	1	0	Sporadic cases	1
Cabo Verde	7	0	1	0	Sporadic cases	6
Mauritania	7	0	1	0	Sporadic cases	2
Burundi	5	2	0	0	Sporadic cases	0
São Tomé and Príncipe	4	0	0	0	Pending	6
South Sudan	4	0	0	0	Pending	1
<b>Territories**</b>						
Réunion	389	1	0	0	Clusters of cases	0
Mayotte	207	16	3	1	Clusters of cases	0
<b>Subtotal for all Regions</b>	<b>1772372</b>	<b>76498</b>	<b>111640</b>	<b>5701</b>		
International conveyance (Diamond Princess)	712	0	12	1	Not Applicable <sup>††</sup>	28
<b>Grand total</b>	<b>1773084</b>	<b>76498</b>	<b>111652</b>	<b>5702</b>		

\* Numbers include both domestic and repatriated cases

<sup>†</sup>The designations employed and the presentation of the material in this publication do not imply the expression of any opinion whatsoever on the part of WHO concerning the legal status of any country, territory, city or area or of its authorities, or concerning the delimitation of its frontiers or boundaries. Dotted and dashed lines on maps represent approximate border lines for which there may not yet be full agreement.

<sup>‡</sup>Case classifications are based on [WHO case definitions](#) for COVID-19.

<sup>§</sup>Transmission classification is based on a process of country/territory/area self-reporting. Classifications are reviewed on a weekly basis and may be upgraded or downgraded as new information becomes available. Not all locations within a given country/territory/area are equally affected; countries/territories/areas experiencing multiple types of transmission are classified in the highest category reported. Within a given transmission category, different countries/territories/areas may have differing degrees of transmission as indicated by the differing numbers of cases, recency of cases, and other factors.

Terms:

- **No cases:** Countries/territories/areas with no confirmed cases (not shown in table)
- **Sporadic cases:** Countries/territories/areas with one or more cases, imported or locally detected
- **Clusters of cases:** Countries/territories/areas experiencing cases, clustered in time, geographic location and/or by common exposures
- **Community transmission:** Countries/area/territories experiencing larger outbreaks of local transmission defined through an assessment of factors including, but not limited to:
  - Large numbers of cases not linkable to transmission chains
  - Large numbers of cases from sentinel lab surveillance
  - Multiple unrelated clusters in several areas of the country/territory/area

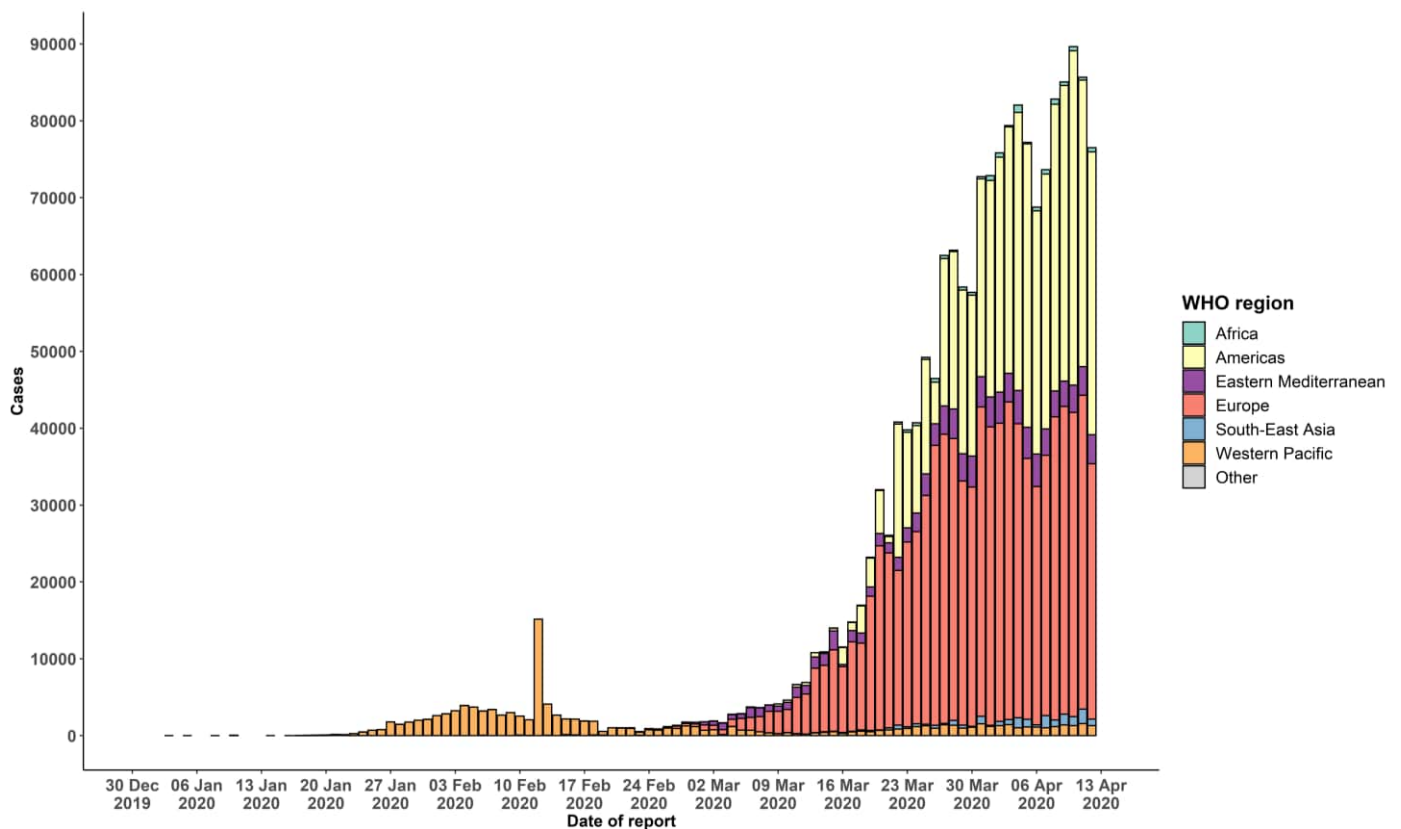
\*\* "Territories" include territories, areas, overseas dependencies and other jurisdictions of similar status

<sup>[1]</sup> All references to Kosovo should be understood to be in the context of the United Nations Security Council resolution 1244 (1999).

<sup>††</sup> As the international conveyance (Diamond Princess) is no longer occupied, transmission classification cannot be applied.

Due to differences in reporting methods, retrospective data consolidation, and reporting delays, the number of new cases may not always reflect the exact difference between yesterday's and today's totals. WHO COVID-19 Situation Reports present official counts of confirmed COVID-19 cases, thus differences between WHO reports and other sources of COVID-19 data using different inclusion criteria and different data cutoff times are to be expected.

Figure 1. Epidemic curve of confirmed COVID-19, by date of report and WHO region through 13 April 2020



## STRATEGIC OBJECTIVES

WHO's strategic objectives for this response are to:

- Interrupt human-to-human transmission including reducing secondary infections among close contacts and health care workers, preventing transmission amplification events, and preventing further international spread\*;
- Identify, isolate and care for patients early, including providing optimized care for infected patients;
- Identify and reduce transmission from the animal source;
- Address crucial unknowns regarding clinical severity, extent of transmission and infection, treatment options, and accelerate the development of diagnostics, therapeutics and vaccines;
- Communicate critical risk and event information to all communities and counter misinformation;
- Minimize social and economic impact through multisectoral partnerships.

\*This can be achieved through a combination of public health measures, such as rapid identification, diagnosis and management of the cases, identification and follow up of the contacts, infection prevention and control in health care settings, implementation of health measures for travelers, awareness-raising in the population and risk communication.



## PREPAREDNESS AND RESPONSE

- To view all technical guidance documents regarding COVID-19, please go to [this webpage](#).
- WHO has developed interim guidance for laboratory diagnosis, advice on the use of masks during home care and in health care settings in the context of COVID-19 outbreak, clinical management, infection prevention and control in health care settings, home care for patients with suspected novel coronavirus, risk communication and community engagement and Global Surveillance for human infection with COVID-19.
- WHO is working closely with International Air Transport Association (IATA) and have jointly developed a guidance document to provide advice to cabin crew and airport workers, based on country queries. The guidance can be found on the [IATA webpage](#).
- WHO has been in regular and direct contact with Member States where cases have been reported. WHO is also informing other countries about the situation and providing support as requested.
- WHO is working with its networks of researchers and other experts to coordinate global work on surveillance, epidemiology, mathematical modelling, diagnostics and virology, clinical care and treatment, infection prevention and control, and risk communication. WHO has issued interim guidance for countries, which are updated regularly.
- WHO has prepared a [disease commodity package](#) that includes an essential list of biomedical equipment, medicines and supplies necessary to care for patients with COVID-19.
- WHO has provided recommendations to reduce risk of [transmission from animals to humans](#).
- WHO has published an [updated recommendations for international traffic in relation to COVID-19 outbreak](#).
- WHO has activated the R&D blueprint to accelerate diagnostics, vaccines, and therapeutics.
- OpenWHO is an interactive, web-based, knowledge-transfer platform offering online courses to improve the response to health emergencies. [COVID-19 courses can be found here](#) and courses in [additional national languages here](#). Specifically, WHO has developed online courses on the following topics:
  - Introduction to Go.Data – Field data collection, chains of transmission and contact follow-up. The Go.Data tool is available globally to WHO staff, member states and partners to support outbreak investigation, focusing on field data collection, contact tracing and visualisation of chains of transmission.
  - A general introduction to emerging respiratory viruses, including novel coronaviruses (available in Arabic, Chinese, English, French, Russian, Spanish, Hindi, Indian Sign Language, Persian, Portuguese, Serbian and Turkish);
  - Clinical care for Severe Acute Respiratory Infections (available in English, French, Russian, Indonesian and Vietnamese);
  - Health and safety briefing for respiratory diseases - ePROTECT (available in Chinese, English, French, Russian, Spanish, Indonesian and Portuguese);
  - Infection Prevention and Control for Novel Coronavirus (COVID-19) (available in Chinese, English, French, Russian, Spanish, Indonesian, Italian, Japanese, Portuguese and Serbian); and
  - COVID-19 Operational Planning Guidelines and COVID-19 Partners Platform to support country preparedness and response (available in English and coming soon in additional languages).
- WHO is providing guidance on early investigations, which are critical in an outbreak of a new virus. The data collected from the protocols can be used to refine recommendations for surveillance and case definitions, to characterize the key epidemiological transmission features of COVID-19, help understand spread, severity, spectrum of disease, impact on the community and to inform operational models for implementation of countermeasures such as case isolation, contact tracing and isolation. Several protocols are available [here](#). One such protocol is for the investigation of early COVID-19 cases and contacts (the "[First Few X \(FFX\) Cases and contact investigation protocol for 2019-novel coronavirus \(2019-nCoV\) infection](#)"). The protocol is designed to gain an early understanding of the key clinical, epidemiological and virological characteristics of the first cases of COVID-19 infection detected in any individual country, to inform the development and updating of public health guidance to manage cases and reduce the potential spread and impact of infection.

## RECOMMENDATIONS AND ADVICE FOR THE PUBLIC

If you are not in an area where COVID-19 is spreading or have not travelled from an area where COVID-19 is spreading or have not been in contact with an infected patient, your risk of infection is low. It is understandable that you may feel anxious about the outbreak. Get the facts from reliable sources to help you accurately determine your risks so that you can take reasonable precautions (see [Frequently Asked Questions](#)). Seek guidance from WHO, your healthcare provider, your national public health authority or your employer for accurate information on COVID-19 and whether COVID-19 is circulating where you live. It is important to be informed of the situation and take appropriate measures to protect yourself and your family (see [Protection measures for everyone](#)).

If you are in an area where there are cases of COVID-19 you need to take the risk of infection seriously. Follow the advice of WHO and guidance issued by national and local health authorities. For most people, COVID-19 infection will cause mild illness however, it can make some people very ill and, in some people, it can be fatal. Older people, and those with pre-existing medical conditions (such as cardiovascular disease, chronic respiratory disease or diabetes) are at risk for severe disease (See [Protection measures for persons who are in or have recently visited \(past 14 days\) areas where COVID-19 is spreading](#)).

## CASE DEFINITIONS

WHO periodically updates the [Global Surveillance for human infection with coronavirus disease \(COVID-19\)](#) document which includes case definitions.

For easy reference, case definitions are included below.

### Suspect case

A. A patient with acute respiratory illness (fever and at least one sign/symptom of respiratory disease, e.g., cough, shortness of breath), AND a history of travel to or residence in a location reporting community transmission of COVID-19 disease during the 14 days prior to symptom onset.

**OR**

B. A patient with any acute respiratory illness AND having been in contact with a confirmed or probable COVID-19 case (see definition of contact) in the last 14 days prior to symptom onset;

**OR**

C. A patient with severe acute respiratory illness (fever and at least one sign/symptom of respiratory disease, e.g., cough, shortness of breath; AND requiring hospitalization) AND in the absence of an alternative diagnosis that fully explains the clinical presentation.

### Probable case

A. A suspect case for whom testing for the COVID-19 virus is inconclusive.

a. Inconclusive being the result of the test reported by the laboratory.

**OR**

B. A suspect case for whom testing could not be performed for any reason.

### Confirmed case

A person with laboratory confirmation of COVID-19 infection, irrespective of clinical signs and symptoms.

- Technical guidance for laboratory testing can be found [here](#).

### Definition of contact

A contact is a person who experienced any one of the following exposures during the 2 days before and the 14 days after the onset of symptoms of a probable or confirmed case:

1. Face-to-face contact with a probable or confirmed case within 1 meter and for more than 15 minutes;
2. Direct physical contact with a probable or confirmed case;
3. Direct care for a patient with probable or confirmed COVID-19 disease without using proper personal protective equipment<sup>1</sup>; OR
4. Other situations as indicated by local risk assessments.

Note: for confirmed asymptomatic cases, the period of contact is measured as the 2 days before through the 14 days *after the date on which the sample was taken* which led to confirmation.

---

<sup>1</sup> World Health Organization. Infection prevention and control during health care when COVID-19 is suspected [https://www.who.int/publications-detail/infection-prevention-and-control-during-health-care-when-novel-coronavirus-\(ncov\)-infection-is-suspected-20200125](https://www.who.int/publications-detail/infection-prevention-and-control-during-health-care-when-novel-coronavirus-(ncov)-infection-is-suspected-20200125)